

# User Manual

Version V1.2-20240607



## BX50L-TAP GNSS RTK&PPP Board User Manual

©2024 Tersus GNSS Inc. All rights reserved.



**Sales Enquiry:** [sales@tersus-gnss.com](mailto:sales@tersus-gnss.com)

**Technical Support:** [support@tersus-gnss.com](mailto:support@tersus-gnss.com)

More details, please visit [www.tersus-gnss.com](http://www.tersus-gnss.com)

## Revision History

Rev	Description	Date
1.0	Initial release	20240326
1.1	Update TAP	20240513
1.2	Update Section3.1	20240607

---

# BX50L-TAP User Agreement

Copyright © 2024 Tersus GNSS Inc.

CAUTION! Please read this notice carefully before using BX50L-TAP. Use of BX50L-TAP indicates acceptance of the terms and conditions of the User Agreement.

Thank you for using BX50L-TAP! This agreement is a legally binding contract between Tersus GNSS Inc. and you regarding the user of BX50L-TAP. Please read all the terms and conditions listed in the agreement carefully. Use of BX50L-TAP indicates that you have agreed to accept all of the terms of this Agreement. If you have any questions about the content of the terms of this Agreement, please contact Tersus GNSS Inc. If you do not agree to any of the terms and conditions of this Agreement, please do not proceed with the subsequent operations.

## 1. License

Tersus provides users with free licenses for Tersus software and related materials, for the purpose of product needs and improvement, when users use Tersus products. Tersus does not guarantee that the free license will not be changed. The license fee will be calculated according to the price published on Tersus official website <http://www.tersus-gnss.com>. Before you pay the license fee as agreed, Tersus will reserve the right not to provide you with Tersus software and related materials. Without the permission of Tersus, users are not allowed to resell it to a third party or use Tersus software and related materials to obtain income through other means in any way.

## 2. Proprietary Rights

The user agrees that Tersus software and related materials shall belong to Tersus, and Tersus retains exclusive ownership of the trademarks and service

marks represented by its company name and logo and all of the documentation related. The user agrees that all technologies, algorithms and processes contained in Tersus software constitute commercial secrets, and the user will protect them. User may not reverse engineer, decompile or disassemble the software, nor alter images used in the software and the documentation. The user are not allowed to copy, modify, and reproduce relevant information, no matter it is modified or translated into another language, unless the permission of Tersus is obtained. The user agrees that if the user violates this agreement, he will be liable for damages determined by the court.

### **3.Customer Service**

According to the situation of users using BX50L-TAP, Tersus will continue to add features, improve performance and experience. Although it is the Tersus's customary practice to provide reasonable assistance and support in the use of Tersus products to customers, Tersus shall not be obligated to any user to provide technical assistance or support through this agreement, and may at Tersus's sole election charge a fee for customer service.

### **4.Update Policy**

Tersus may regularly or irregularly, update the firmware of BX50L-TAP to add functions or fix issues. Tersus is not obliged to provide updates or modifications to any user, nor do we guarantee that that updates or modifications are fully in line with expectations.

### **5.Disclaimer**

Tersus will try best to make that the function of BX50L-TAP run normally and the data calculation is correct, but Tersus does not guarantee that all functions of the BX50L-TAP meets the expectations, the data calculation is correct and the stability of the BX50L-TAP runs stably. Tersus and distributors will not be

liable for any indirect, special, incidental, consequential or exemplary damages caused in any way.

## **6.Termination**

This agreement is hereby terminated by mutual agreement or by any breach of any one or more provisions of this agreement by either party. In such cases, all rights of Tersus shall remain in force and effect. Any protected information data of user maintained on database shall upon notice to the user and at the discretion of Tersus may be destroyed.

## **7.Copyright**

Tersus BX50L-TAP and related materials (including, but not limited to, any images, photographs, animations, video, audio, music or text incorporated into the BX50L-TAP), and all intellectual property rights associated with it, whether exists in a tangible media or in an electronic media is owned by Tersus. You may not remove or alter any trademark, logo, copyright and other proprietary notice in or on the products.

## **8.Other**

Tersus has the right to amend all the contents of this agreement and product policy, and the right to interpret them within the scope of law.

This agreement will be effective once it is published, and Tersus has the right to modify the content of the agreement at any time, and the modified results will be published on the Tersus website. If you do not agree with the modifications made, you have the right to stop using BX50L-TAP. If the user continues to use, it is deemed that the user accepts the modifications.

The conclusion, implementation and interpretation of this agreement and the settlement of disputes shall be governed by the laws of China and subject to the jurisdiction of the Chinese courts. If any dispute arises between the parties regarding the content of this agreement or its implementation, the parties shall

try to resolve it through friendly consultation; if consultation fails, either party may file a lawsuit in the court where Tersus GNSS is located.

# Table of Content

Revision History .....	I
BX50L-TAP User Agreement .....	II
Table of Content .....	VI
List of Figures .....	VIII
List of Tables .....	VIII
Notices .....	1
1. Introduction .....	2
1.1 Overview of BX50L-TAP GNSS board .....	2
1.2 Receiver features .....	3
1.3 Related information .....	4
1.4 BX50L-TAP System Overview .....	5
1.4.1 BX50L-TAP Board .....	6
1.4.2 Antenna .....	7
1.4.3 Power Supply .....	7
1.4.4 Communication Equipment .....	7
1.4.5 Internal eMMC .....	7
2. Installation .....	8
2.1 Unpacking .....	8
2.2 Environmental conditions .....	8
2.3 Selecting a GNSS antenna .....	9
2.4 Power Supply .....	10
2.5 Installation .....	10

---

2.6 Tersus GNSS Center Software .....	11
2.7 RTK Configuration .....	14
3. Technical Specifications .....	16
3.1 BX50L-TAP specifications .....	16
3.2 System integration .....	19
3.2.1 Connectors on BX50L-TAP board .....	19
5. Typical Application .....	20
5.1 Communicate with STRSVR Tool .....	20
6. Terminology .....	23



## List of Figures


Figure 1.1	System Overview of BX Boards .....	5
Figure 2.1	Config Page of Tersus GNSS Center .....	12
Figure 2.2	Main Windows of Tersus GNSS Center .....	13
Figure 5.1	Configure serial port COM1 .....	21
Figure 5.2	NTRIP client configuration .....	21
Figure 5.3	Draft position of the board .....	22

## List of Tables

Table 1.1	Document / Software used in this User Manual .....	4
Table 2.1	Definition of the lights on Tersus GNSS Center .....	12
Table 3.1	BX50L-TAP Board Specifications .....	16
Table 3.2	24-pin header signals definition .....	19
Table 3.3	6-pin header signal definition .....	20

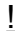
## Notices


The following notices apply to Tersus BX50L-TAP board.


	Changes or modifications to this equipment not expressly approved by Tersus could void the user's authority to operate this equipment or even has risk to damage the GNSS RTK Boards.
---	---

## Conventions

The following conventions are used in this manual:

	Information that supplements or clarifies text.
---	---

	A caution that actions, operation or configuration may lead to incorrect or improper use of the hardware.
---	---

	A warning that actions, operation or configuration may result in regulatory noncompliance, safety issues or equipment damage.
---	---

In this manual, all the commands are in capital letters, which is just for easy identification, the commands are not case-sensitive.

# 1. Introduction

## 1.1 Overview of BX50L-TAP GNSS board

The BX50L-TAP adopts Tersus Antares chip, and provides real-time monitoring of interference signals and automatic filtering. It tracks all current GNSS constellations including GPS, GLONASS, Galileo, BeiDou, QZSS, SBAS, and IRNSS to improve continuity and reliability of RTK solutions that provide centimeter positioning.

The BX50L-TAP includes TAP, the satellite-based precise point positioning service developed by Tersus GNSS. With TAP, the GNSS rover receiver will not need to work with the local RTK base station or CORS, but directly receives corrections broadcast by the satellite, such as ephemeris error, satellite clock error, etc.

The BX50L-TAP board supports multiple constellations and multiple frequencies to improve the continuity and reliability of the RTK solution even in harsh environments. In-built 8GB memory makes data collection easy. It features compatibility with other GNSS boards in the market via flexible interfaces, smart hardware design, and commonly used log/command formats.

For further information about BX50L-TAP GNSS board, refer to

<https://www.tersus-gnss.com/> for more details.

## 1.2 Receiver features

The BX50L-TAP Receiver has the following features:

- Supports multiple constellations & frequencies
  - GPS L1 C/A, L1C, L2C, L2P, L5C
  - GLONASS L1OF, L2OF, L3OC
  - BeiDou B1I, B2I, B3I, B1C, B2a, B2b
  - Galileo E1, E5a, E5b, E5AltBOC, E6
  - QZSS L1 C/A, L1C, L2C, L5C
  - SBAS L1 C/A, L5
  - IRNSS L5
  - L-Band
- Supports 1792 channels
- Centimeter-level position accuracy
- Flexible interfaces such as RS232, TTL, USB, CAN, Ethernet
- Supports PPS output and event mark input
- Supports up to 20Hz RTK solution updates and raw data output
- In-built 8GB memory makes data collection easy
- Pin-to-pin compatible with Trimble BD970
- Log/command compatible with NovAtel protocol

### 1.3 Related information

Table 1.1 Document / Software used in this User Manual

Name	Description	Link
Log & Command document	Document providing all the loggings output from BX50L-TAP receivers and all the commands to the receivers	<a href="http://www.thersus-gnss.com/BX50C_GNSS_OEM_Board_Tersus_GNSS_(tersus-gnss.com)">BX50C GNSS OEM Board   Tersus GNSS (tersus-gnss.com)</a>
Tersus Tool Suite	Tersus Tools including TersusDownload, TersusGeoPix, TersusGNSSCenter, TersusUpdate, TersusRinexConverter	<a href="https://www.thersus-gnss.com/software">https://www.thersus-gnss.com/software</a>
RTKLIB	A free & popularly used Post processing tool	<a href="http://www.rtklib.com/">http://www.rtklib.com/</a>

### Support

If there is any problem and the information needed cannot be found in the product documentation, request technical support by sending email to [support@tersus-gnss.com](mailto:support@tersus-gnss.com) or logging a ticket in our tracking system <https://tersus.supportsystem.com/> .

## 1.4 BX50L-TAP System Overview

To make BX50L-TAP board work, the following parts are necessary:

- ✧ Interface board and cables
- ✧ Power supply
- ✧ Data communications equipment
- ✧ GNSS antenna with Low Noise Amplifier (LNA)

The BX50L-TAP receiver is illustrated in the figure below.

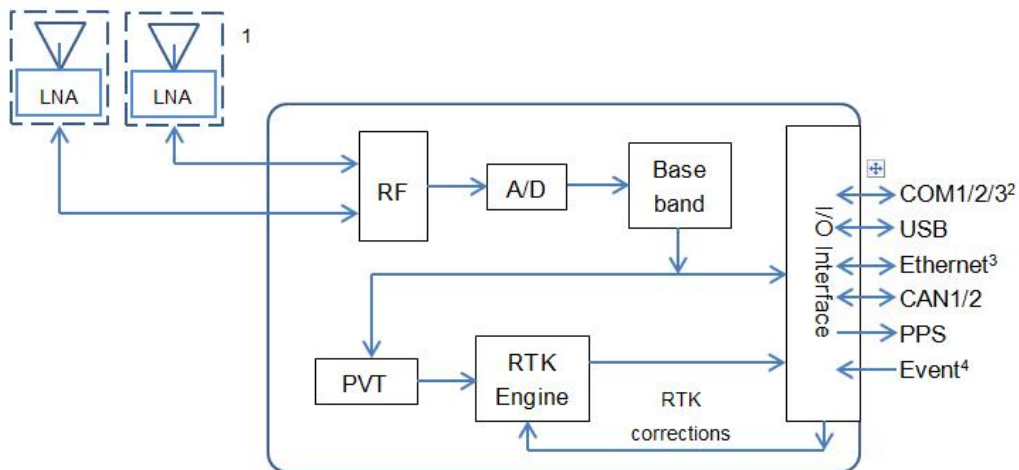


Figure 1.1 System Overview of BX Boards

Note 1. BX50L-TAP only support single antenna.

2. COM3\_TX is multiplexed with CAN1\_TX, COM3\_RX is multiplexed with Event 2.

3. Hardware of Ethernet is ready, reserved for future upgrade.

4: Currently two event inputs are supported.

### 1.4.1 BX50L-TAP Board

The BX50L-TAP board is shown as below.

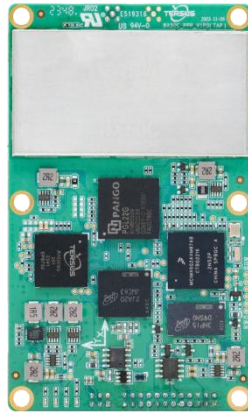


Figure 1.2 The BX50L-TAP Board

BX50L-TAP board consists of a Radio Frequency (RF) section and a digital section.

#### **Radio Frequency (RF) Section**

The receiver obtains filtered, amplified GNSS signals from the antenna. The RF section down converts the incoming RF signals to Intermediate Frequency (IF) signals which are processed by the digital section. The RF section also supplies power to the active antenna LNA through the coaxial cable. The RF section has been designed to reject common sources of interference.

#### **Digital Section**

The core of the digital section is the base band, which is realized with a FPGA chip. The digital section digitizes and processes the base band signals to obtain a PVT (Position, Velocity and Time) solution. If RTK corrections from the base are received, the receiver will output cm-level position. The digital section also processes the system I/O, shown in Figure 1.1.

## 1.4.2 Antenna

The antenna converts electromagnetic signals transmitted by GNSS satellites into electrical signals that can be used by the receiver.

An active GNSS antenna is required for optimal receiver performance. Tersus is providing active GNSS antennas with precise phase centers and robust enclosures (refer to <https://www.tersus-gnss.com/product/accessories> for more information about antennas.

## 1.4.3 Power Supply

A power supply capable of delivering the minimum receiver operating voltage and power is required. The receiver operates at 3.3V.

## 1.4.4 Communication Equipment

A computer, a tablet or other data communications device are necessary to communicate with the receiver, and to receive and store the data that the receiver outputs.

## 1.4.5 Internal eMMC

BX50L-TAP receiver supports up to 8GB internal eMMC.



## 2. Installation

!	The BX50L-TAP board can be integrated to the customer's system in various packages, and all actions can refer to the installation guide in this chapter.
---	--

### 2.1 Unpacking

Inspect the shipping cartons visually for any signs of damage or mishandling before unpacking the receiver. Immediately report any damage to the shipping carrier.

Please check each item according to your order and the item list to confirm that all the accessories are correct for the purchased order.

### 2.2 Environmental conditions

Install the receiver in a location situated in a dry environment with ESD protection. Avoid exposure to extreme environment conditions including:

- Water or excessive moisture
- Excessive heat greater than 85 °C (185 °F)
- Excessive cold less than -40 °C (-40 °F)
- Corrosive fluids and gases

Avoiding these conditions improves the receiver's performance and long-term reliability.

## 2.3 Selecting a GNSS antenna

The BX50L-TAP tracks multiple GNSS frequencies, ensure that the antenna you choose supports the frequencies you need to track.

The antennas provided by Tersus can be found on Tersus website <https://tersus-gnss.com/product/accessories>. It is highly recommended that the antennas from Tersus are used to work with BX50L-TAP.



Contact Tersus support if problem occurs when an antenna from other vendors is used.

When installing the antenna:

- Choose an antenna location with a good view of the sky so that there is no obstruction from horizon to horizon.
- Mount the antenna on a secure, stable structure capable of safe operation in the specific environment.
- Avoid areas with high vibration, excessive heat, electrical interference, and strong magnetic fields.
- Avoid mounting the antenna close to stays, electrical cables, metal masts, and other antennas.
- Avoid mounting the antenna near transmitting antennas, radar arrays, or satellite communication equipment.

## 2.4 Power Supply



Power to the BX50L-TAP board must be applied for >150ms before any of the external interfaces are powered on by the integrator's board.

Hold the RESETIN pin low during power up and for >150ms after power is applied.



The receiver operates at 3.3V. If the voltage supplied is below the specification, the receiver suspends operation.



The BX50L-TAP receiver supports reversed polarity protection.

## 2.5 Installation

When the appropriate equipment is selected, complete the following steps to set up and begin using the BX50L-TAP.

- a) Install the BX50L-TAP board in an enclosure or on a mother board.
- b) Mount the GNSS antenna to a secure, stable structure.
- c) Connect the GNSS antenna to the receiver with a GNSS antenna cable.
- d) Apply power to the board, as described in section 1.4.3.
- e) Connect the board to a computer or other data communications equipment.



When BX50L-TAP board is handled, follow the guides below to avoid damage from ESD.

- Always wear a properly grounded anti-static wrist strap when handling BX50L-TAP board.
- Always hold the board by the corners or the RF shield: avoid direct contact with any of the components.
- Never let the board come in contact with clothing. The ground strap cannot dissipate static charges from fabrics.
- Failure to follow accepted ESD handling practices could cause damage to the board permanently.
- The warranty may be void if equipment is damaged by ESD.

## 2.6 Tersus GNSS Center Software

BX50L-TAP GNSS RTK board has serial ports, hence lots of serial tools can be used to communicate with the board. Tersus GNSS Center is a windows-platform-based serial tool, which is recommended to communicate with the BX50L-TAP board. Tersus GNSS Center can be downloaded from Tersus website <https://tersus-gnss.com/software> .

Connect BX50L-TAP to a laptop/PC with an external cable. Run Tersus GNSS Center, the following config page is shown, input the port and band rate (default is 115200).

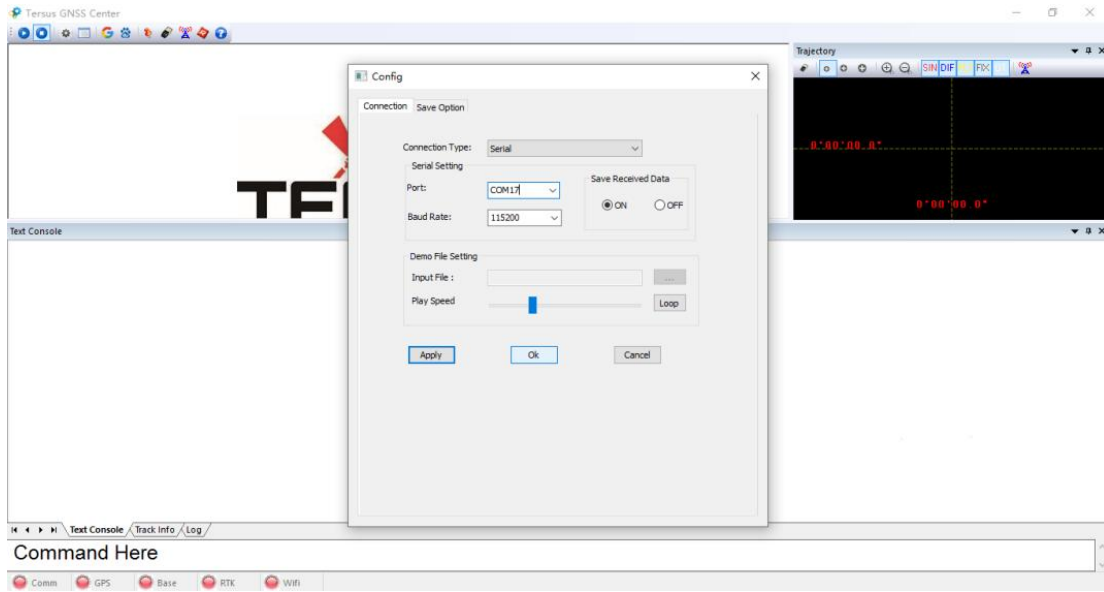


Figure 2.1 Config Page of Tersus GNSS Center

The following table gives definition for the five lights at the bottom of Tersus GNSS Center interface.

Table 2.1 Definition of the lights on Tersus GNSS Center

Lights	Description
Comm	GREEN: the communication with the receiver is established. RED: the communication with the receiver is not established.
GPS	GREEN: valid GPGGA is received. RED: No valid GPGGA is received.
Base	GREEN: valid corrections are received. RED: No valid corrections are received.
RTK	SOLID GREEN: RTK solution is got. BLINK GREEN: float solution is got. RED: other solutions are got.
Wifi	Reserved.

Commands can be input in the text console window, an [OK] response is output after a command is input, or the command is not input successfully.

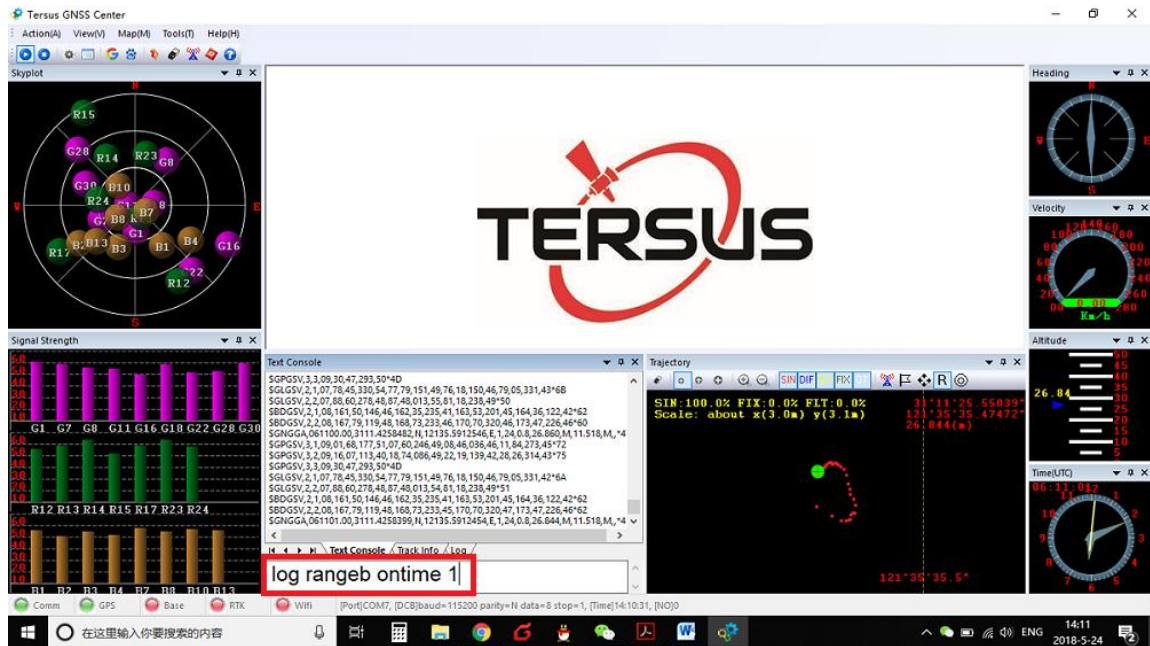


Figure 2.2 Main Windows of TERSUS GNSS Center

<p>!</p>	<p>To active the skyplot, signal strength, trajectory and other windows, the antenna signals must be received and the following three loggings must be input to the receiver:</p> <p>LOG GPGGA ONTIME 1 // output position and time</p> <p>LOG GPGSV ONTIME 1 // output SVs in view, elevation and SNR (Signal Noise Ratio)</p> <p>LOG RNAGEB ONTIME 1 // output PSR (Pseudorange) and ADR (Accumulated Doppler Range.)</p>
----------	---

refer to *Log & Command Reference* document for details.

## 2.7 RTK Configuration

Example of RTK configuration (base mode):

```
UNLOGALL                //remove all logs
UNDULATION USER 0.0 //Set user specified undulation value for ellipsoid height
FIX POSITION B L H      //B: latitude (degree), L: longitude (degree), H: ellipsoid height (m)
                        For example: FIX POSITION xx.xxxxxx xx.xxxxxx xx.xx
                        or POSAVE ON 0.02 //Turn on position average for 0.02 hour (72s)
LOG COM2 RTCM1006 ONTIME 10 //output the base coordinate
LOG COM2 RTCM1074 ONTIME 1 //output GPS observations
LOG COM2 RTCM1084 ONTIME 1 //output GLONASS observations
LOG COM2 RTCM1094 ONTIME 1 //output Galileo observations
LOG COM2 RTCM1114 ONTIME 1 //output QZSS observations
LOG COM2 RTCM1124 ONTIME 1 //output BeiDou observations
LOG COM2 RTCM1230 ONTIME 10 //output GLONASS bias information
LOG COM2 RTCM1033 ONTIME 10 //output antenna, receiver information
SAVECONFIG              //save the configuration above
```

Example of RTK configuration (rover mode):

```
UNLOGALL                //remove all logs
FIX NONE                //cancel the fixed coordinate of a base station
LOG GPGGA ONTIME 1     //output GPGGA to check position type
SAVECONFIG              //save the configuration above
```

!	<p>The antenna of the base must be static and its position must be input, several ways can be used to input the position of the base:</p> <ul style="list-style-type: none"><li>● If the base's position is known, input it directly with command FIX.</li></ul>
---	--

- If the base's position is unknown, and the accuracy of the base can be meter-level, then it is recommended to use command POSAVE to setup the base, refer to the Log & Command document for more about this command. Please note the base's position will be different after a power cycle even if the antenna is installed at the same point if POSAVE command is input.
- If you require a cm level accuracy of base and rover, then:
  - a. Configure the base receiver as a rover, receive RTK corrections from a CORS nearby, this receiver can get cm-level accuracy position.
  - b. Collect raw measurements for half an hour, process it with post processing software or send the data to an online processing web, e.g. OPUS, to get an accurate position.



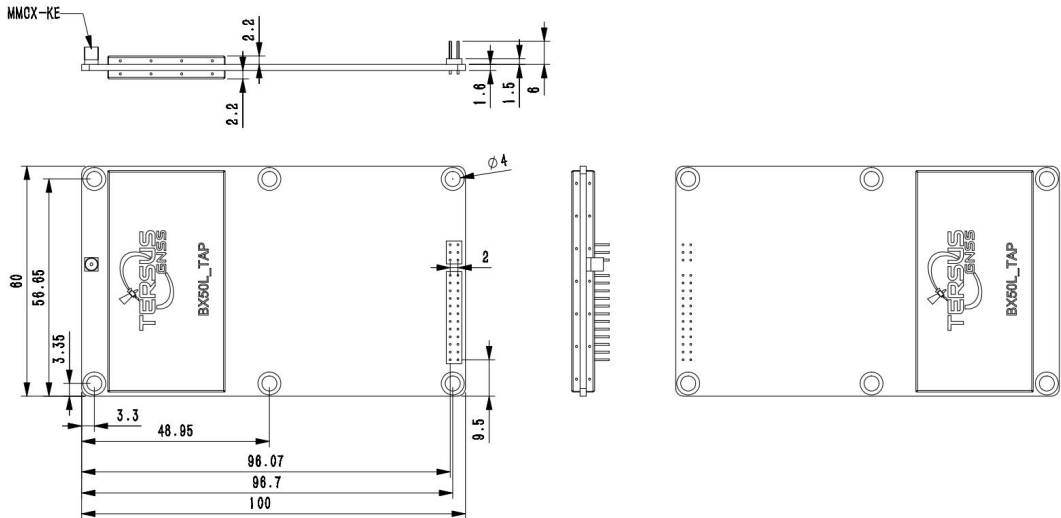
## 3. Technical Specifications

### 3.1 BX50L-TAP specifications

Table 3.1 BX50L-TAP Board Specifications

Performance		
Signal Tracking	GPS L1 C/A, L1C, L2C, L2P, L5C GLONASS L1OF, L2OF, L3OC BeiDou B1I, B2I, B3I, B1C, B2a, B2b Galileo E1, E5a, E5b, E5AltBOC, E6 QZSS L1 C/A, L1C, L2C, L5C SBAS L1 C/A, L5 IRNSS L5 L-Band	
GNSS Channels	1792	
Position Accuracy(RMS)	Single point positioning	1.5m (Horizontal)
		3.0m (Vertical)
	RTK positioning	8mm+1ppm (Horizontal)
		15mm+1ppm (Vertical)
	DGPS positioning	0.25m (Horizontal)
		0.5m (Vertical)
	High-Precision Static	2.5mm+0.1ppm (Horizontal)
		3.5mm+0.4ppm (Vertical)
TAP	Positioning Accuracy(RMS)	15mm (Horizontal)
		30mm (Vertical)
	Convergence Time	3 minutes
	Coverage	Global

	Signal stability	99.99%
Observation Accuracy (zenith direction):	C/A Code	10cm
	P Code	10cm
	Carrier Phase	1mm
Time to First Fix	Cold Start	<35s
	Warm Start	<10s
Reacquisition	<1s	
Time Accuracy(RMS)	20ns	
Velocity Accuracy(RMS)	0.03m/s	
Initialization (typical)	4s	
Initialization Reliability	>99.99%	
Correction	RTCM 2.3/3.0/3.1/3.2/CMR/CMR+	
Data output	NMEA-0183 and Tersus Binary Format	
Data Rate	20Hz	
Storage	In-built 8GB memory	
<b>Communication</b>		
Serial ports	RS-232 x1, TTL x2	
COM baud rate	Up to 921600bps	
USB ports	USB 2.0 device x1	
PPS ports	LVTTL x1	
Event mark	LVTTL x1	
<b>Electrical</b>		
Input Voltage	+3.3 VDC $\pm$ 5%	
Power Consumption	1.9W (typical)	
<b>Physical</b>		
Size	100 * 60 * 10.1 mm <sup>3</sup>	
Weight	44g	

IO connectors	24pin header + 6pin header
Antenna Connector	MMCX female x1
<b>Environmental</b>	
Operating Temperature	-40°C ~ +85°C
Storage Temperature	-55°C ~ +95°C
<b>Mechanical Drawing</b>	
 <p>The mechanical drawing includes a side view of the MMCX-KE connector with dimensions: 2.2mm for the connector body, 1.6mm for the pin height, 1.5mm for the pin width, and 6mm for the pin length. The top view shows the board dimensions: 60mm height, 56.65mm width, and 3.35mm offset. The bottom view shows the board dimensions: 3.3mm offset, 48.95mm width, 98.07mm length, 98.7mm length, and 100mm length. A hole diameter of 4mm is indicated. The board is labeled 'TERSUS GNSS BX50L-TAP'.</p>	

## 3.2 System integration

### 3.2.1 Connectors on BX50L-TAP board

There are two connectors on the BX50L-TAP board: a 24-pin and a 6-pin header.

Table 3.2 24-pin header signals definition

Pin	Signal	Type	Description
1	GND	GND	Ground digital ground
2	RTK_LED	O	RTK LED, flashes when an RTK correction is present.
3	RSV/POWER_OFF	IO	Reserved, compatible with power off
4	PPS	O	Pulse per second output, TTL level.
5	VCC	PWR	power supply
6	VCC	PWR	power supply
7	CAN1_RX/RX3/EVENT2	IO	CAN1_RX, CAN Receive line; COM3 RX, COM3 Receive line, TTL level; Event2, Event input, TTL level.
8	EVENT1	IO	Event1 input, TTL level
9	PWRLED	O	Power indicator, high when unit is on, low when off.
10	SATLED	O	Satellite LED, rapid flash indicates <5 satellites, slow flash indicates >5 satellites.
11	COM2_CTS	IO	COM2 Clear to Send, TTL level
12	nRESETIN	I	Reset input, active low to reset.
13	COM2_RTS	IO	COM2 Request to Send, TTL level
14	COM2_RX	I	COM2 Receive Data, TTL level
15	COM1_CTS	IO	COM1 Clear to Send, RS-232 level
16	COM2_TX	O	COM2 Transmit Data, TTL level
17	COM1_RTS	IO	COM1 Request to Send, RS-232 level
18	COM1_RX	I	COM1 Receive Data, RS-232 level
19	COM3_TX/CAN1_TX	O	COM3 Transmit Data, TTL level; CAN1 Transmit line.
20	COM1_TX	O	COM1 Transmit Data, RS-232 level
21	USB D-	IO	USB Data- bi-directional
22	USB D+	IO	USB Data+ bi-directional
23	GND	GND	Ground digital ground
24	GND	GND	Ground digital ground

Table 3.3 6-pin header signal definition

Pin	Signal	Type	Description
1	ETH_RD-	I	Ethernet Receiver line minus. Differential pair.
2	ETH_RD+	I	Ethernet Receiver line plus. Differential pair.
3	CENT_RD	IO	RD Magnetic center tap
4	ETH_TD+	O	Ethernet Transmit line plus. Differential pair.
5	ETH_TD-	O	Ethernet Transmit line minus. Differential pair.
6	CENT_TD	IO	TD Magnetic center tap.

\*Hardware of Ethernet is ready, reserved for future upgrade.

## 5. Typical Application

### 5.1 Communicate with STRSVR Tool

The steps of BX50L-TAP communicating with STRSVR tool are as follows:

- 1) Power on the BX50L-TAP receiver, connect COM1 and COM2 to the computer. COM2 is to communicate with Tersus GNSS Center, COM1 is to receive RTK corrections from a NTRIP caster.
- 2) Run RTKLIB -> STRSVR, select serial for output type. And click the option button for serial port COM1 and configure it.

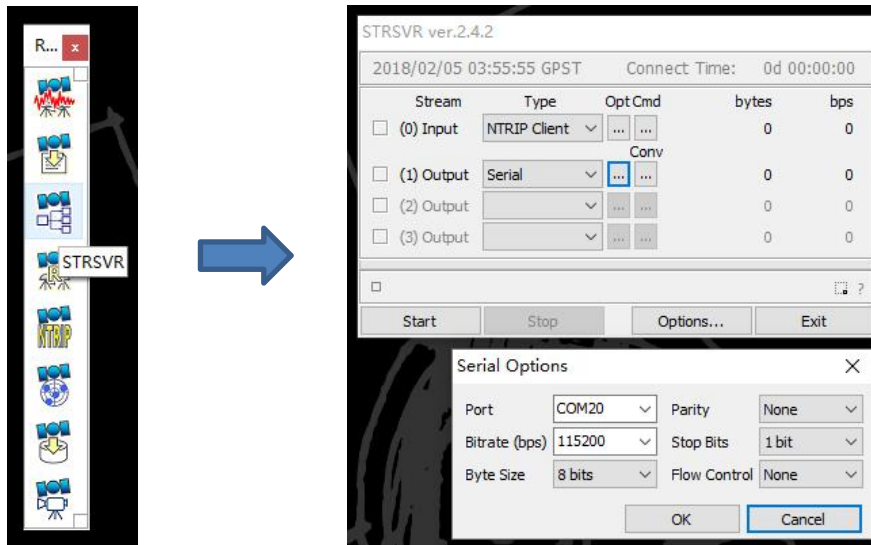


Figure 5.1 Configure serial port COM1

- 3) Select NTRIP client for input type, click the Opt button for NTRIP, and fill all the five fields for NTRIP client configuration.

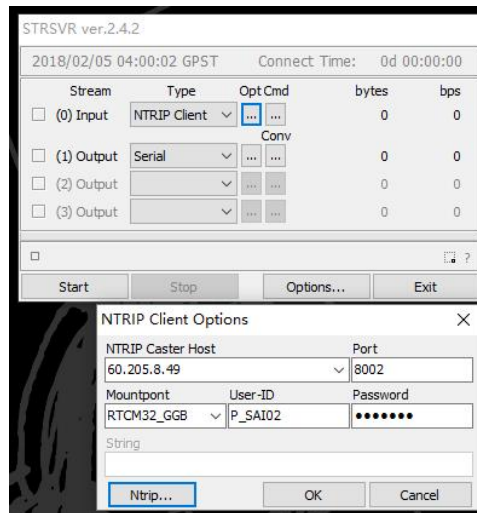


Figure 5.2 NTRIP client configuration

- 4) If needed, draft position of the board is input, refer to the following figure.

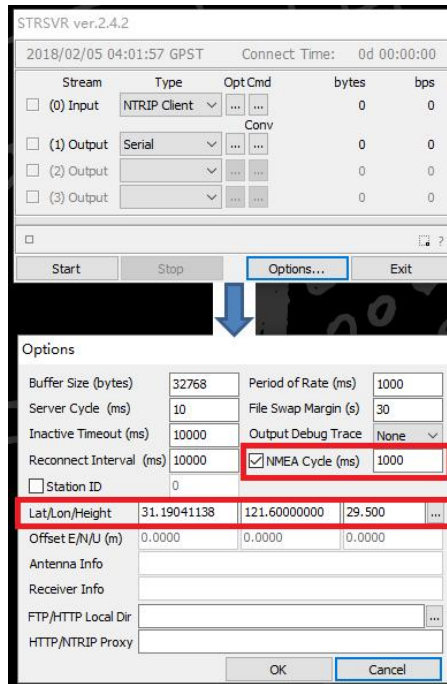


Figure 5.3 Draft position of the board

- 5) Go back to the main page, and click [Start]. If everything is OK the following page will be shown. The input and output data will increase with time. And the position type of the receiver can be checked in Tersus GNSS Center software.

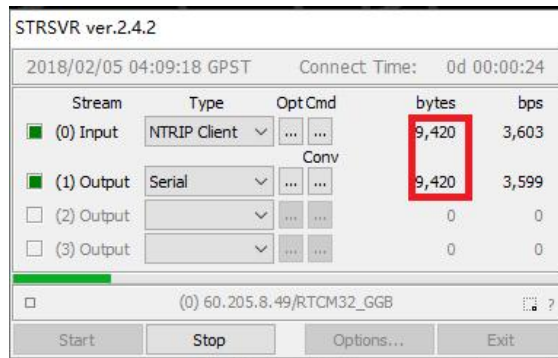


Figure 5.4 Input and Output data in progress

## 6. Terminology

ASCII	American Standard Code for Information Interchange
CMR	Compact Measurement Record
DC	Direct Current
ESD	Electro-Static Discharge
ECEF	Earth Center Earth Fixed
EGNOS	European Geostationary Navigation Overlay Service
GAGAN	GPS Aided Geo Augmented Navigation
GLONASS	GLObal NAVigation Satellite System
GNSS	Global Navigation Satellite System
GPS	Global Positioning System
IF	Intermediate Frequency
IMU	Inertial Measurement Unit
IO	Input / Output
LED	Light Emitting Diode
LNA	Low Noise Amplifier
MPU	Micro Processing Unit
NMEA	National Marine Electronics Association
PC	Personal Computer
PPS	Pulse Per Second
QZSS	Quasi-Zenith Satellite System
RF	Radio Frequency
RINEX	Receiver Independent Exchange format
RMS	Root Mean Squares
RTK	Real-Time Kinematic



---

RTCM	Radio Technical Commission for Maritime Services
SBAS	Satellite-Based Augmentation System
SNR	Signal-to-Noise Ratio
SMA	Sub-Miniature-A interface
TTF	Time to First Fix
TTL	Transistor-Transistor Logic level
UART	Universal Asynchronous Receiver/Transmitter
USB	Universal Serial BUS
UTC	Universal Time Coordinated
VRS	Virtual Reference Station
WAAS	Wide Area Augmentation System
WGS84	World Geodetic System 1984

**Proprietary Notice**

All Information in this document is subject to change without notice and does not reflect the commitment on Tersus GNSS Inc. No part of this manual may be reproduced or transmitted by all means without authorization of Tersus GNSS Inc. The software described in this document must be used in terms of the agreement. Any modification without permission from Tersus GNSS Inc. is not allowed.